

# New Mexico School-Based Health Centers

73 SBHCs in New Mexico

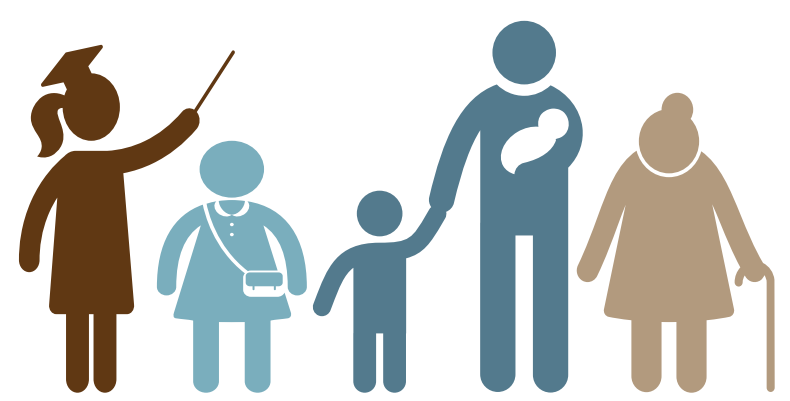


48 SBHCs funded by NMDOH

School-based health centers provide quality, integrated, youth-friendly, and culturally responsive health care services to keep children and adolescents healthy, in school, and ready to learn.

## Where are SBHCs located?

- 42 high schools
- 11 middle schools
- 4 elementary schools
- 16 combined grade campuses

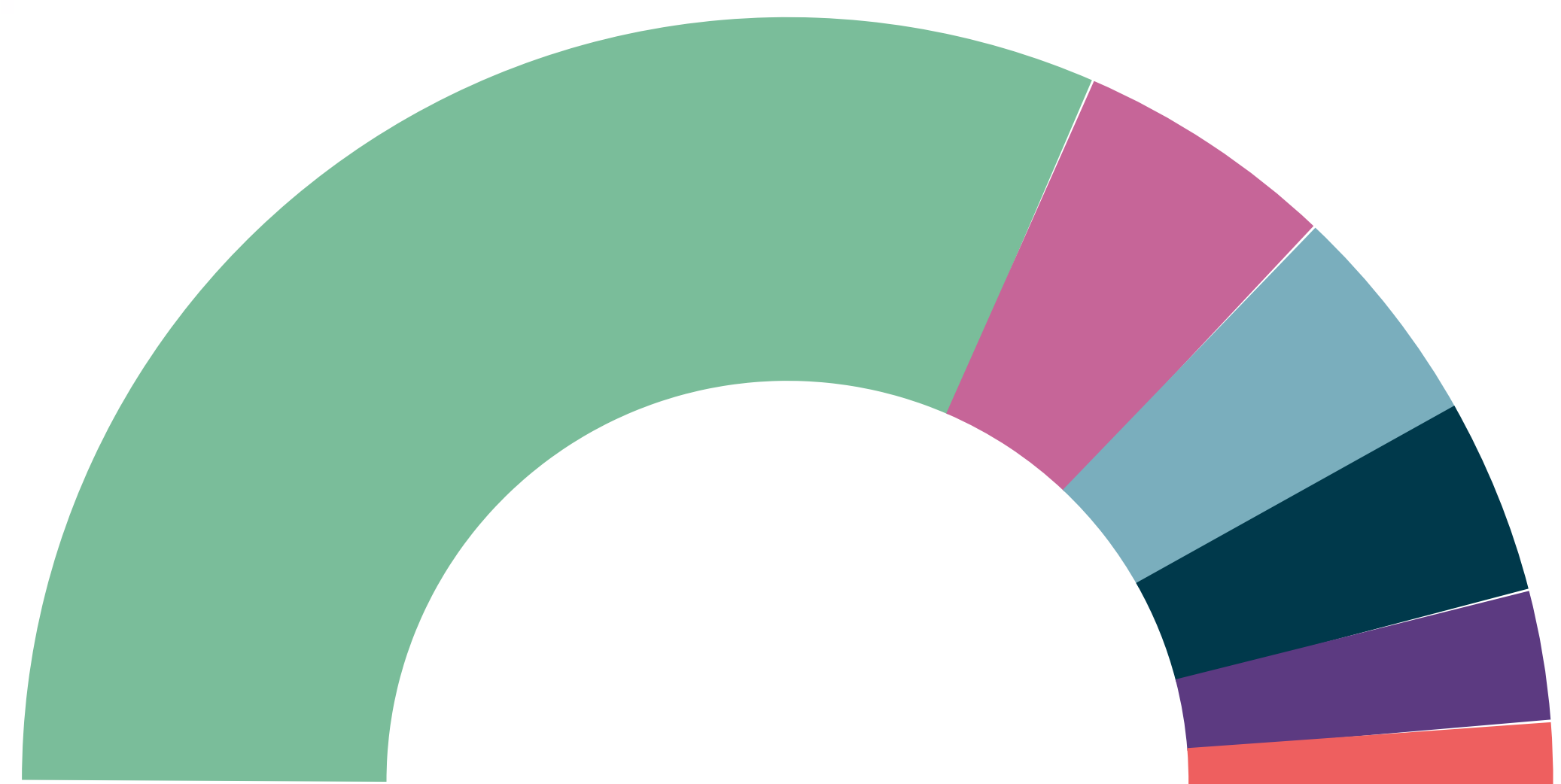
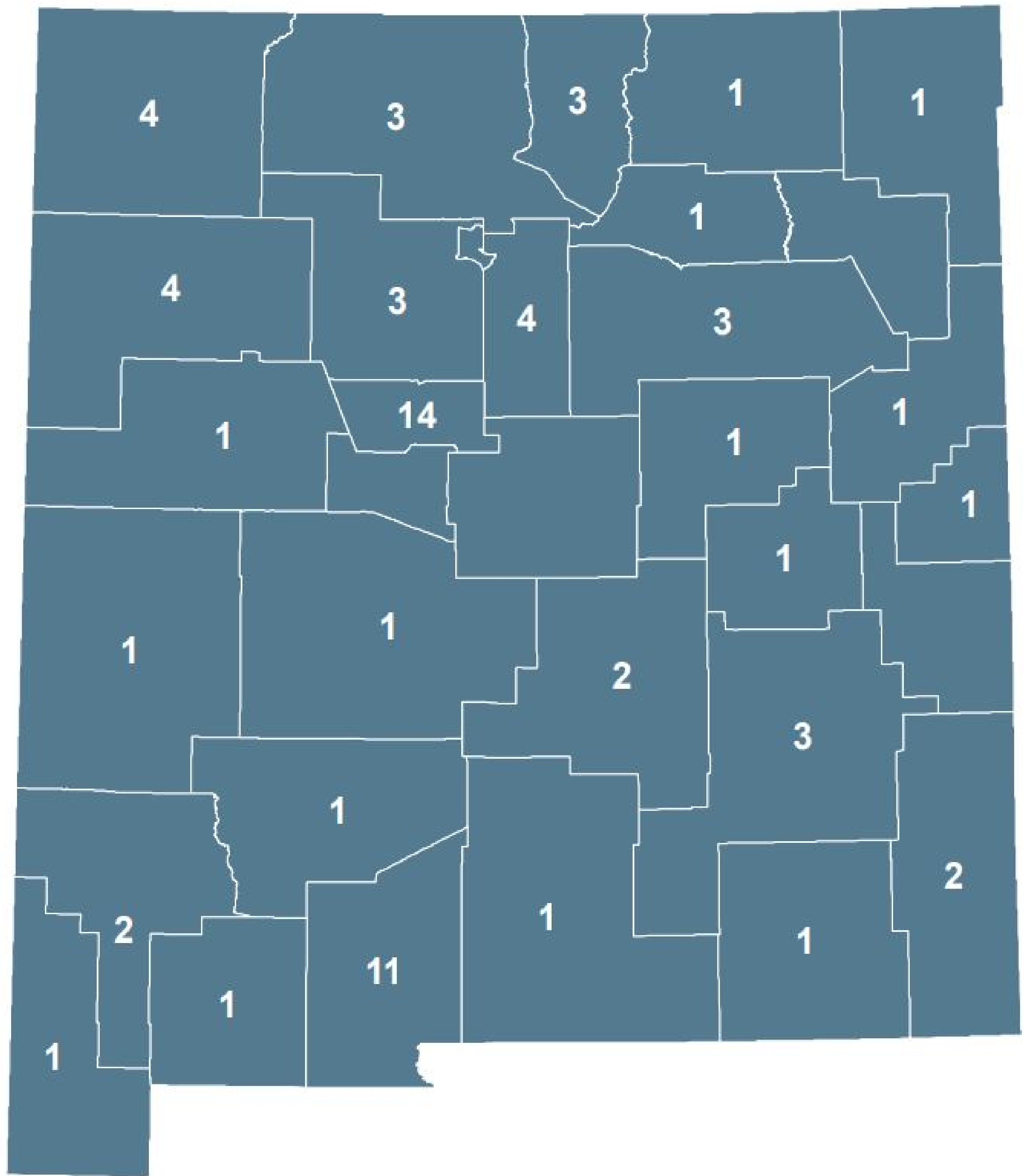
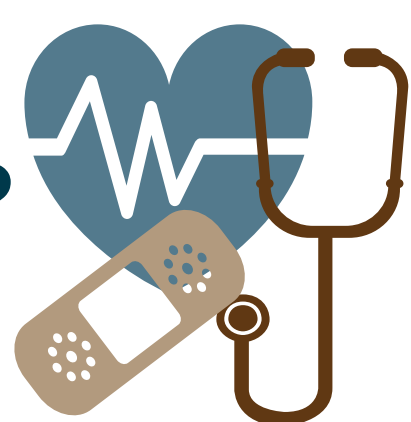


## Who do SBHCs Serve?

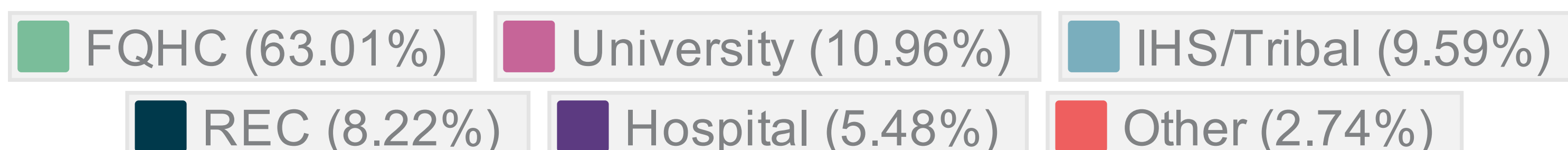
- 100% serve any students at the host school regardless of ability to pay
- 56% serve school staff
- 55% serve students from other schools/districts
- 48% serve family/siblings of students
- 48% can serve children 5 and under
- 17% serve the broader community

## What Services are Provided?

- Acute care for minor illnesses and injuries
- Behavioral health care
- Comprehensive wellness exams (EPSDT)
- Immunizations
- Prevention, diagnosis, treatment, and management of chronic diseases
- Reproductive health care



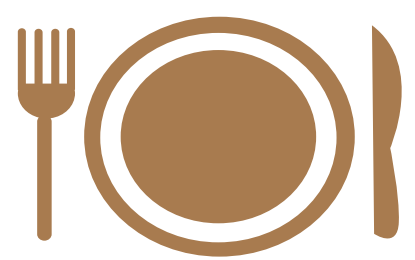
## Who Sponsors SBHCs?





# Impact of SBHCs

## SBHCs and Education



85% of SBHCs are located at schools with a free and reduced lunch rate over 50%

73% of students who use a SBHC say that they miss less class time by going to the SBHC than going someplace else.\*

\*based on data from those surveyed at NMDOH funded SBHCs

Studies have shown improved school attendance, grades, and graduation rates as a result of SBHC intervention.

## SBHCs serve our most vulnerable children and teens



Over 75% report serving students who are homeless.



85% report serving students whose families experience hunger/food insecurity.



60% report providing direct support for LGBTQ+ students through SafeZones, Gay Straight Alliances, behavioral health support groups, etc.

"SBHCs provide services to students who would not otherwise receive treatment for behavioral health issues."

-SBHC Provider

## Increasing Health Care Access

Over 90%

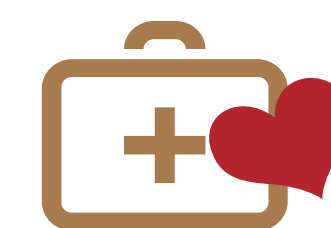
of SBHCs are located in Health Provider Shortage Areas (HPSAs) for primary care, behavioral health, and/or both.



81% of counties in NM have an SBHC.

"The School-Based Health Center is a very important part of our rural community. Without their services it would be impossible for our children to be seen. . . . We hope that we can continue to rely on this integral part of our children's health care."

-SW New Mexico Grandparent



68%

of SBHCs can provide some level of contraceptive care: condoms, birth control prescriptions, dispense birth control onsite, LARC, etc.



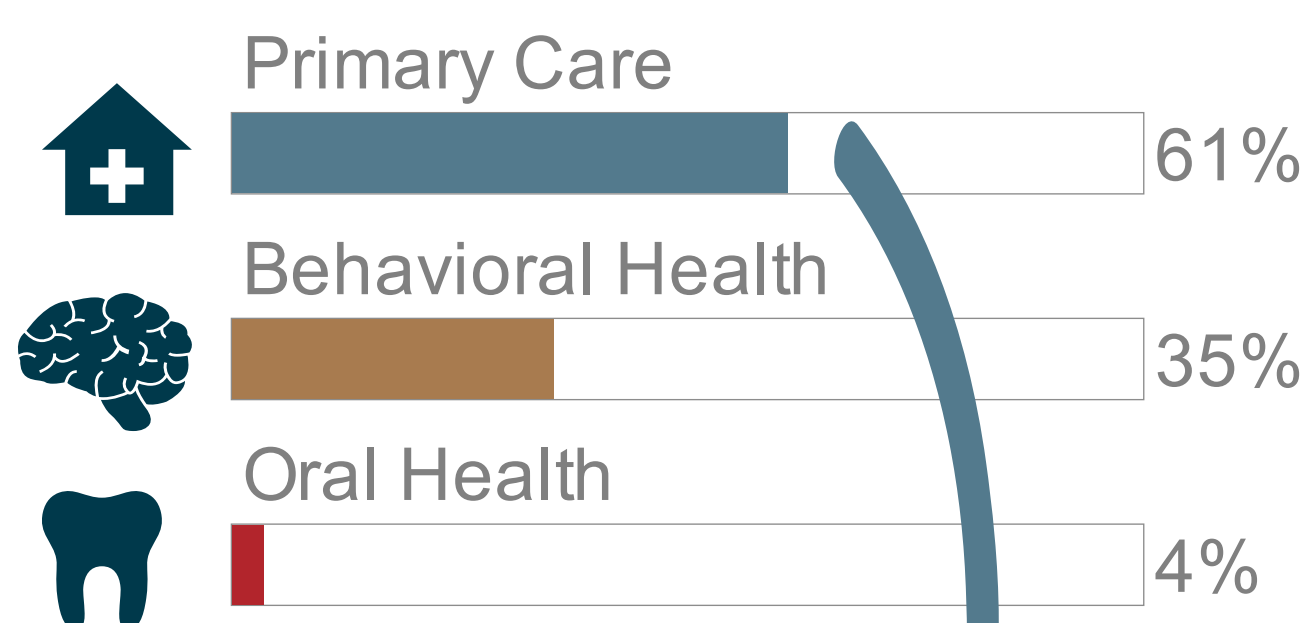
44%



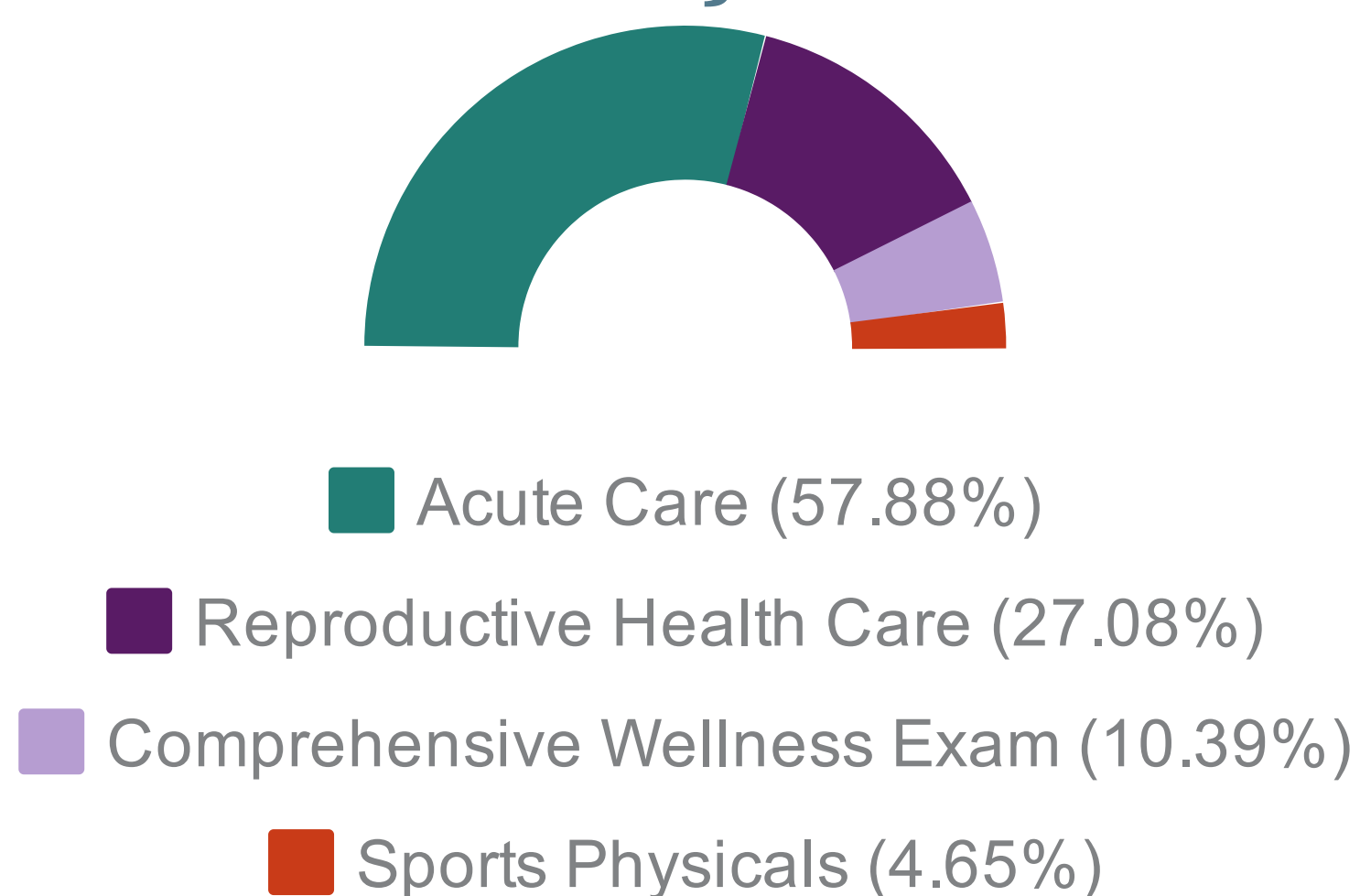
of SBHCs can provide Long Acting Reversible Contraception (LARC) services.

## NMDOH Funded SBHC Data

### SBHCs Provide Comprehensive Care



### Of All Primary Care Visits



### SBHCs respond to the behavioral health crisis

100% of SBHCs are committed to providing behavioral health services.



881.5

behavioral health service hours provided per week at NMDOH SBHCs.

23.3%



of behavioral health visits are for students seeking help with depression.

### SBHCs Address Reproductive Health Needs

17% of SBHC visits are for reproductive health care

### LARC Insertion at NMDOH SBHCs

